

AIRMEN'S MESS

Harwell

Stand-alone building of c. 17,000 sq ft
undergoing comprehensive refurbishment



- High-quality Grade A refurbishment
- At the heart of the campus
- With access to the new campus amenities
- Available in part or as a whole

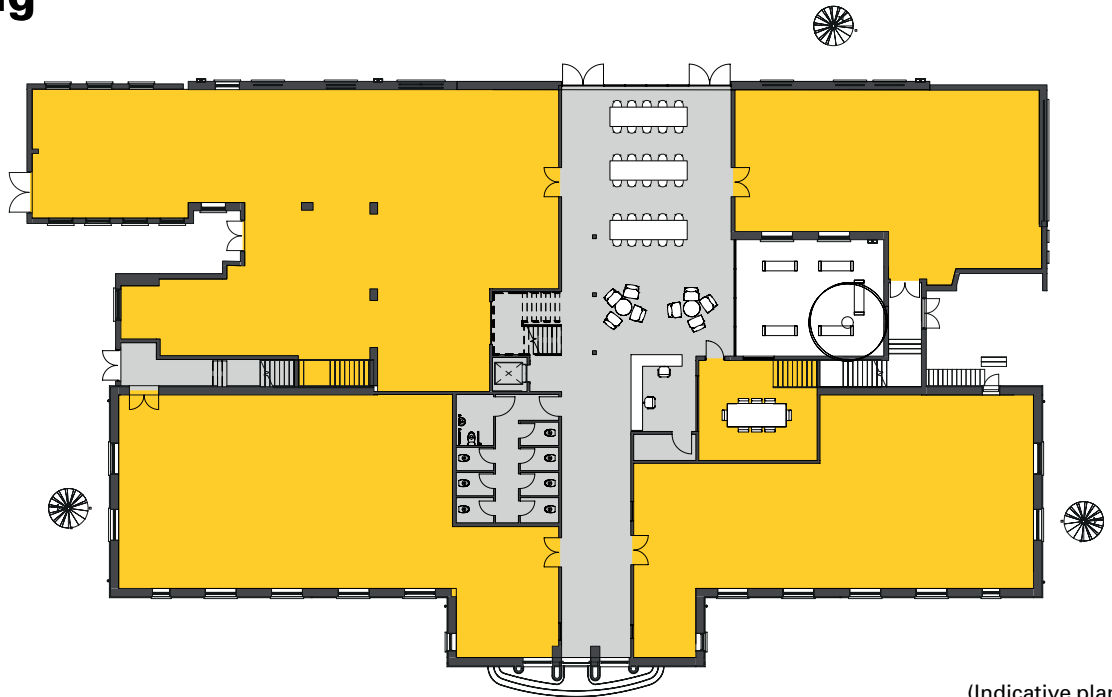


Indicative photographs of refurbished accommodation

The building

Ground floor

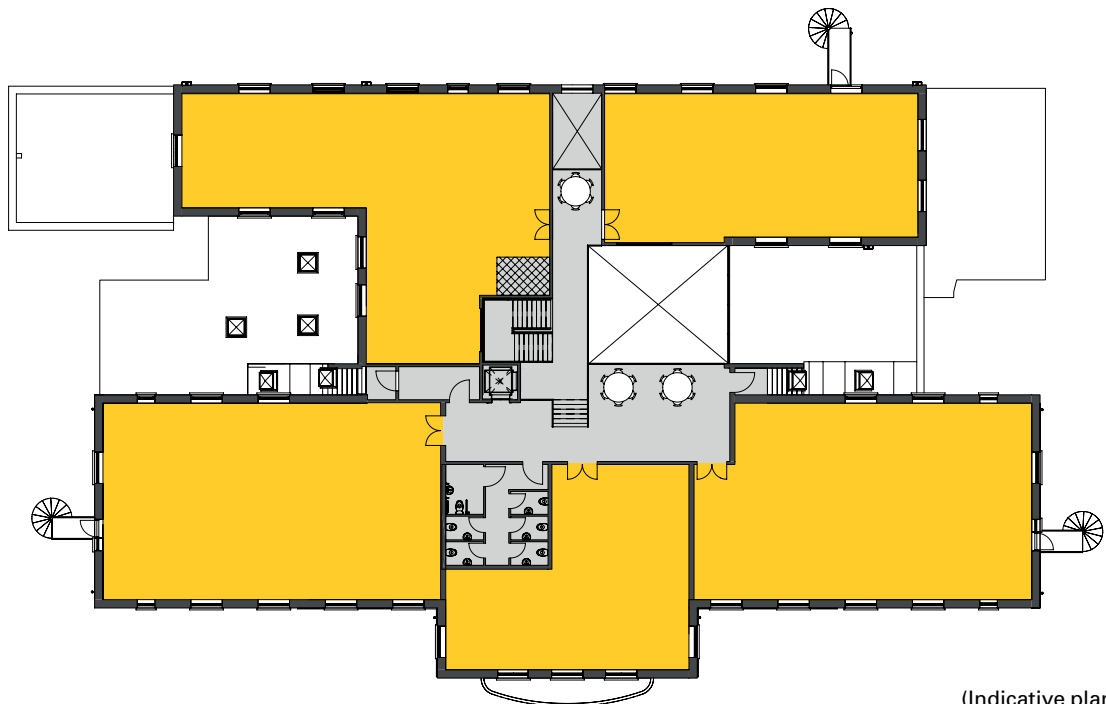
c. 9,500 sq ft
(883 sq m)



(Indicative plan)

First floor

c. 7,500 sq ft
(697 sq m)



(Indicative plan)

Airmen's Mess is an imposing, stand-alone building set in a prominent position on Thomson Avenue overlooking the new Quad Development and a short walk to the new Gym and Café.

The building is being comprehensively refurbished to provide Grade A accommodation suitable for office and laboratory use. The refurbishment will preserve the building's character enhancing the existing features and providing a new offering. Nearby amenities include a gym, café/restaurant, convenience shop and sports pitches.

The building is available as a whole, or on a floor-by-floor basis. The refurbishment specification will include:

- A new air conditioning system
- LED lighting
- New ceiling system
- New flooring
- New WC's
- Shower facilities
- Car parking ratio of 1:30 sq m
- High ceilings

THE UK'S HOME OF INNOVATION



"It's often the intersection, the collision of different people with different takes on problems, which creates wholly new ways of looking at things and solving problems."

Professor Andrew Harrison CEO,
Diamond Light Source



710 ACRES
5,500 PEOPLE
200+
ORGANISATIONS
TALENT FROM OVER
60 COUNTRIES

Harwell is where the world of tomorrow is taking shape. Fast becoming one of the world's largest and most important science and innovation locations, it's a community of 5,500 scientists, engineers and innovators, collaborating on many of the world's most advanced technologies, delivering breakthroughs that are transforming lives worldwide.

Home to national and international institutions including The Science and Technology Facilities Council, The European Space Agency, The Medical Research Council and the UK Space Gateway, Harwell is founded on a legacy of groundbreaking innovations, from Europe's first nuclear reactor in 1947, and the

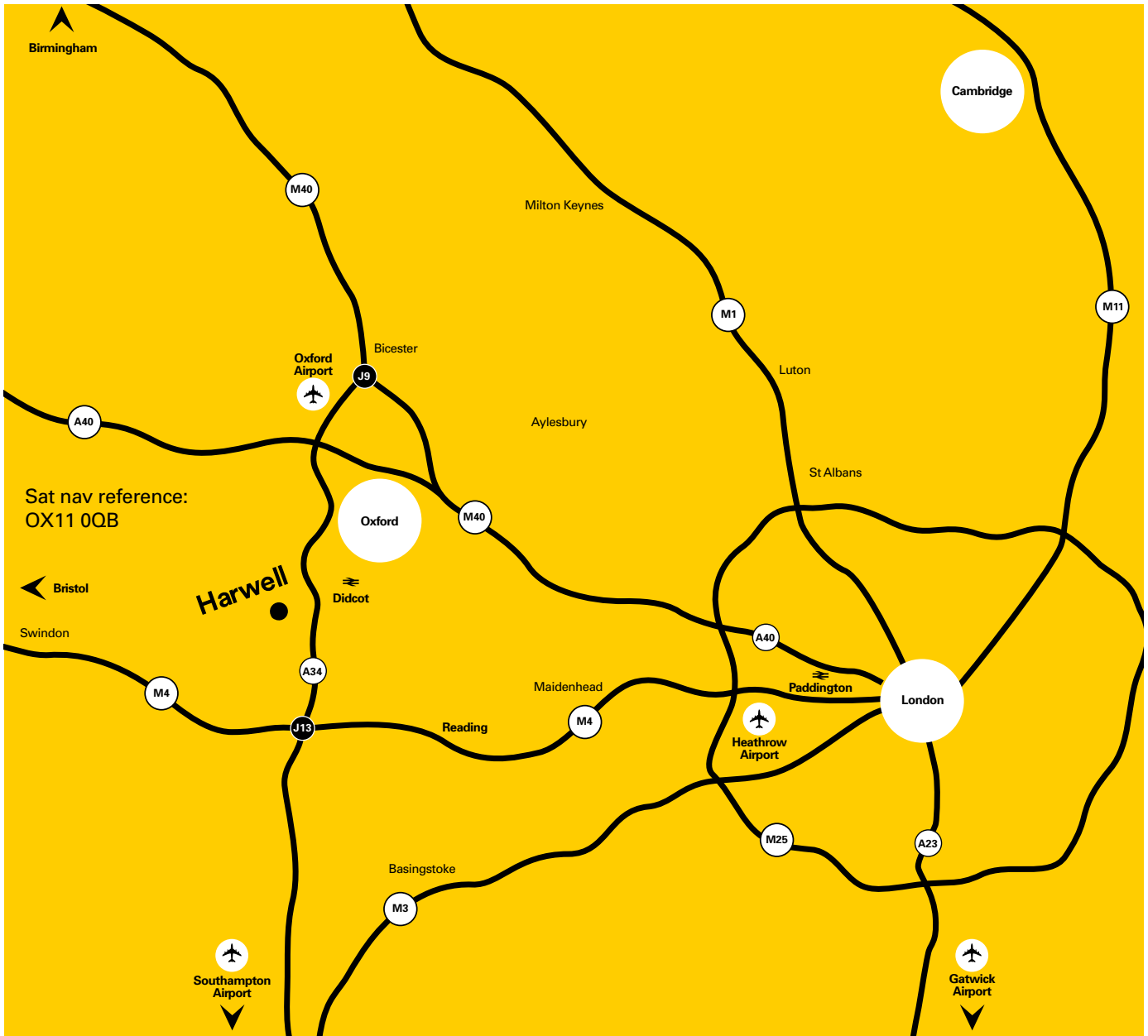
world's first transistorised computer in 1953, to the Diamond Light Source synchrotron in 2007.

With exceptional individuals from more than 60 countries and open access facilities on one site, Harwell is a hotbed of cross-sector innovation. This is a community in every sense of the word, designed for living as well as working, with an international outlook and a uniquely collaborative culture.

Business and professional development is a priority here, with an active approach to nurturing collaboration through open days, forums, networking events the vibrant space, Health Tech and Energy Tech clusters here.

Ambitious plans for future growth include millions more square feet of commercial and technical space, accommodating tens of thousands of the world's brightest and most dedicated scientists and engineers.

A wealth of global scientific and engineering talent is readily accessible on-site, regionally and nationally with strong links to Oxford, London and Cambridge.



Lambert Smith Hampton

Kevin Wood

kwood@lsh.co.uk
 +44 (0) 1865 200244
 +44 (0) 7900 584150

Charlotte Reaney

creaney@lsh.co.uk
 +44 (0) 1865 200244
 +44 (0) 7841 684842

Bidwells

David Williams

david.williams@bidwells.co.uk
 +44 (0) 1865 592632
 +44 (0) 7768 985949

Robert Beatson

robert.beatson@bidwells.co.uk
 +44 (0) 1865 592627
 +44 (0) 7976 590996



harwellcampus.com

HarwellCampus

