

HARWELL

HQ

A historic HQ for modern innovation

Flexible office and dry lab accommodation,
from 100 SQF to 22,114 SQF

Tech Hub



HQ at a glance

Workspace for emerging startups

Up to 22,114 SQF of Grade A workspace

Flexible space and leases from a one person office to larger offices designed to help organisations collaborate



A new hub for tech innovation

Designed specifically for small tech companies, this new hub provides an inspiring environment to launch and grow. With short term leases and a range of fit out options, businesses can tailor their space to suit their needs from day one



Built to scale with you

Whether expanding teams or evolving operations, the environment adapts with you—providing the flexibility and infrastructure needed for long-term success, with hubs available from 100 SQF up to 21,859 SQF



A legacy of innovation

With a long-standing history of innovation, HQ Tech Hub is recognised with a celebrated blue plaque, honouring its role in shaping ideas and breakthroughs, grounding the space in a legacy of pioneering ideas



Collaboration at the core

Refurbished shared collaboration areas and a shared kitchen create natural opportunities for connection. The space encourages interaction, helping like-minded innovators to meet, exchange ideas, and spark new partnerships



Harwell: the UK supercampus

Harwell is home to cutting-edge scientific facilities, institutes, businesses, and expert teams working to advance knowledge and find solutions. Founded in 1946, our fast growing campus provides the talent, community and infrastructure to help innovation businesses start, scale and thrive.

7,500+

scientists, engineers and innovators

180+

community events per year

16

national scientific facilities, institutes and agencies

5 clusters

space, energy, health, quantum and defence and security

30+

UK universities are working on projects at Harwell

250+

organisations based on campus



Scan to watch the video or [click here](#)



Location

MITC: Moderna Innovation & Technology Centre

European Space Agency

ESA Conference Centre

Diamond Light Source Synchrotron

RAL Space

Rosalind Franklin Institute

The Faraday Institution

ISIS Neutron and Muon Source

National Quantum Computing Centre

Thales / UK Space Agency

UK Health Security Agency

Satellite Applications Catapult

HQ Tech Hub

MDA Space / HE Space

Medical Research Council

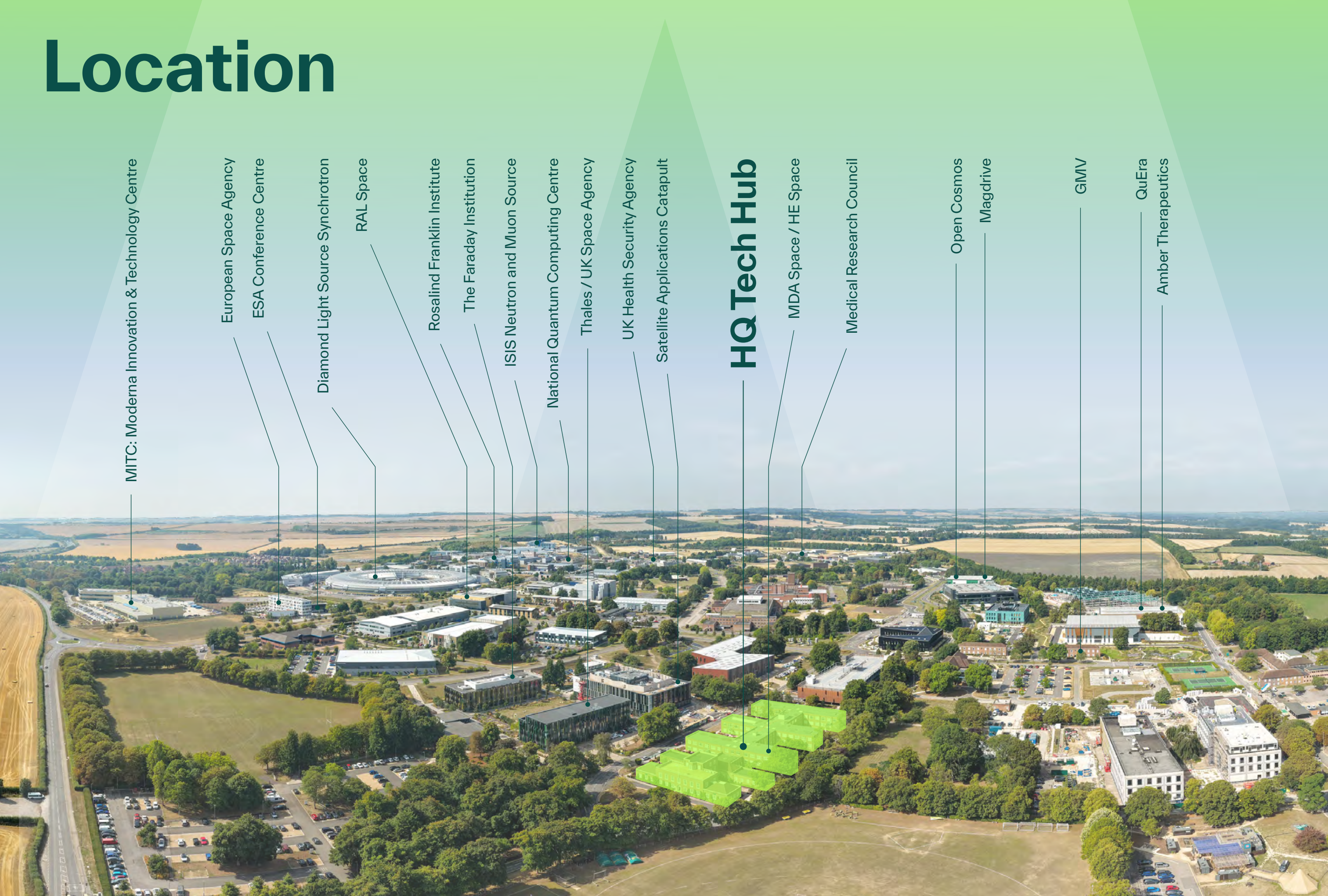
Open Cosmos

Magdrive

GMV

QuEra

Amber Therapeutics



Layout

Ground Floor

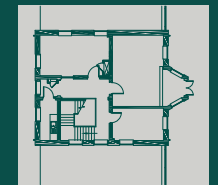
| Unit (indicative NIA) | Available space SQF NIA |
|--------------------------|----------------------------|
| Tech Hub G | 2,168 |
| Tech Hub H | 2,244 |
| Tech Hub J | 2,236 Under offer |
| Tech Hub K | 2,094 |

First Floor

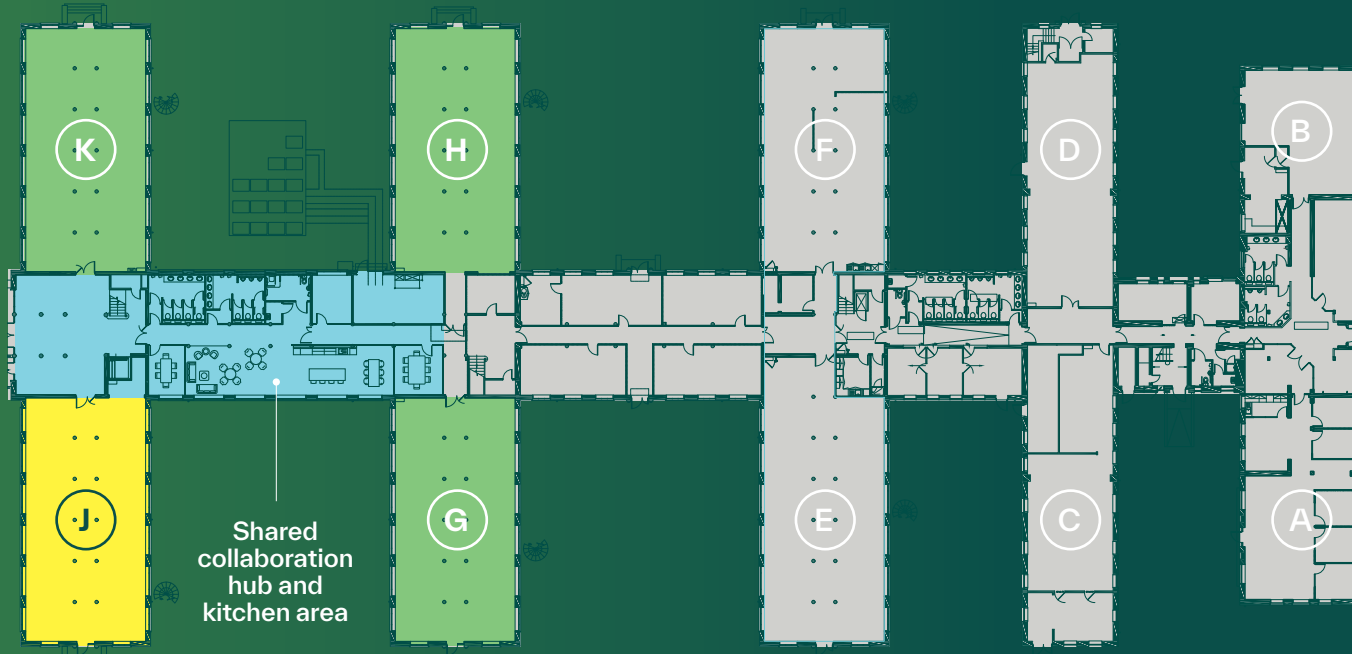
| Unit (indicative NIA) | Available space SQF NIA |
|--------------------------|----------------------------|
| Tech Hub E | 2,526 |
| Tech Hub Link 3a | 100 |
| Tech Hub Link 4 | 1,871 |
| Tech Hub G | 2,157 |
| Tech Hub H | 2,377 |
| Tech Hub J | 2,169 Under offer |
| Tech Hub K | 2,172 |

*Tech Hub spaces can be combined to accommodate larger workspace requirements

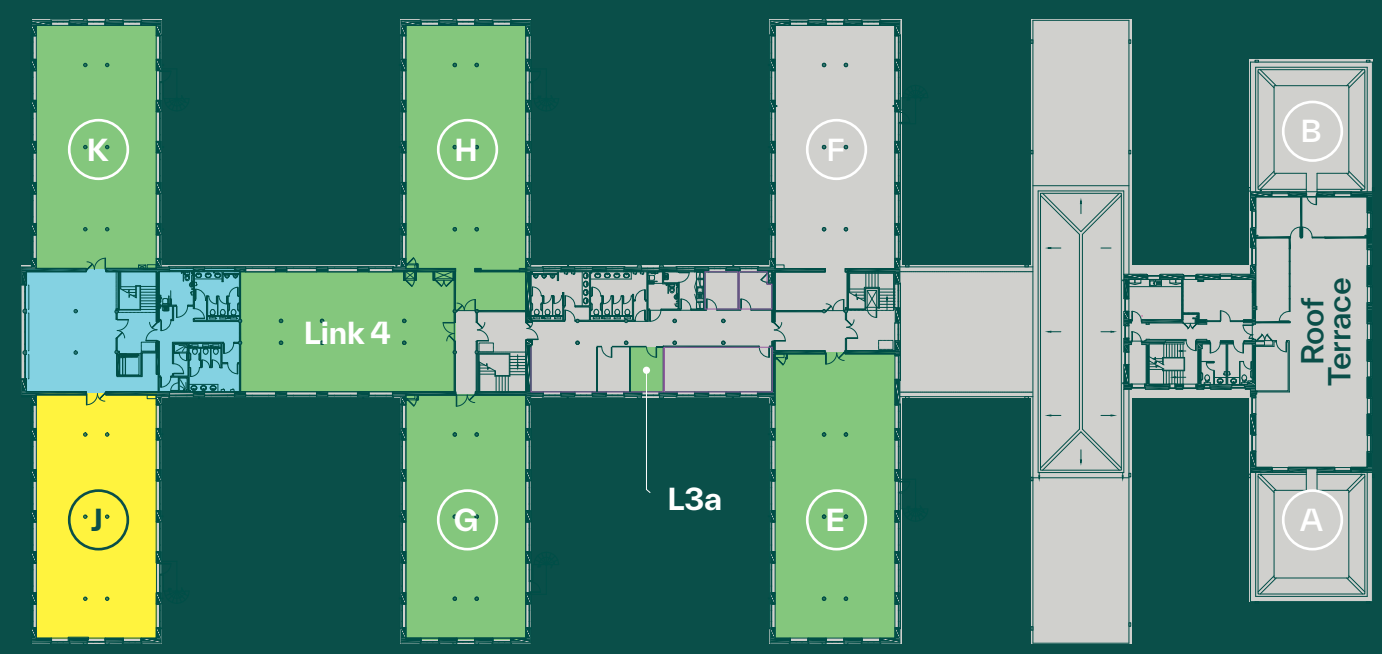
Second Floor



Ground Floor



First Floor



HQ
TECH HUB



Specification



LED lighting



On-site car parking



Electric vehicle charging points



Fitted suites available



Shower facilities



Air conditioning and natural ventilation



EPC C



Free to use meeting and collaboration space



Dry labs available


















Passenger lift

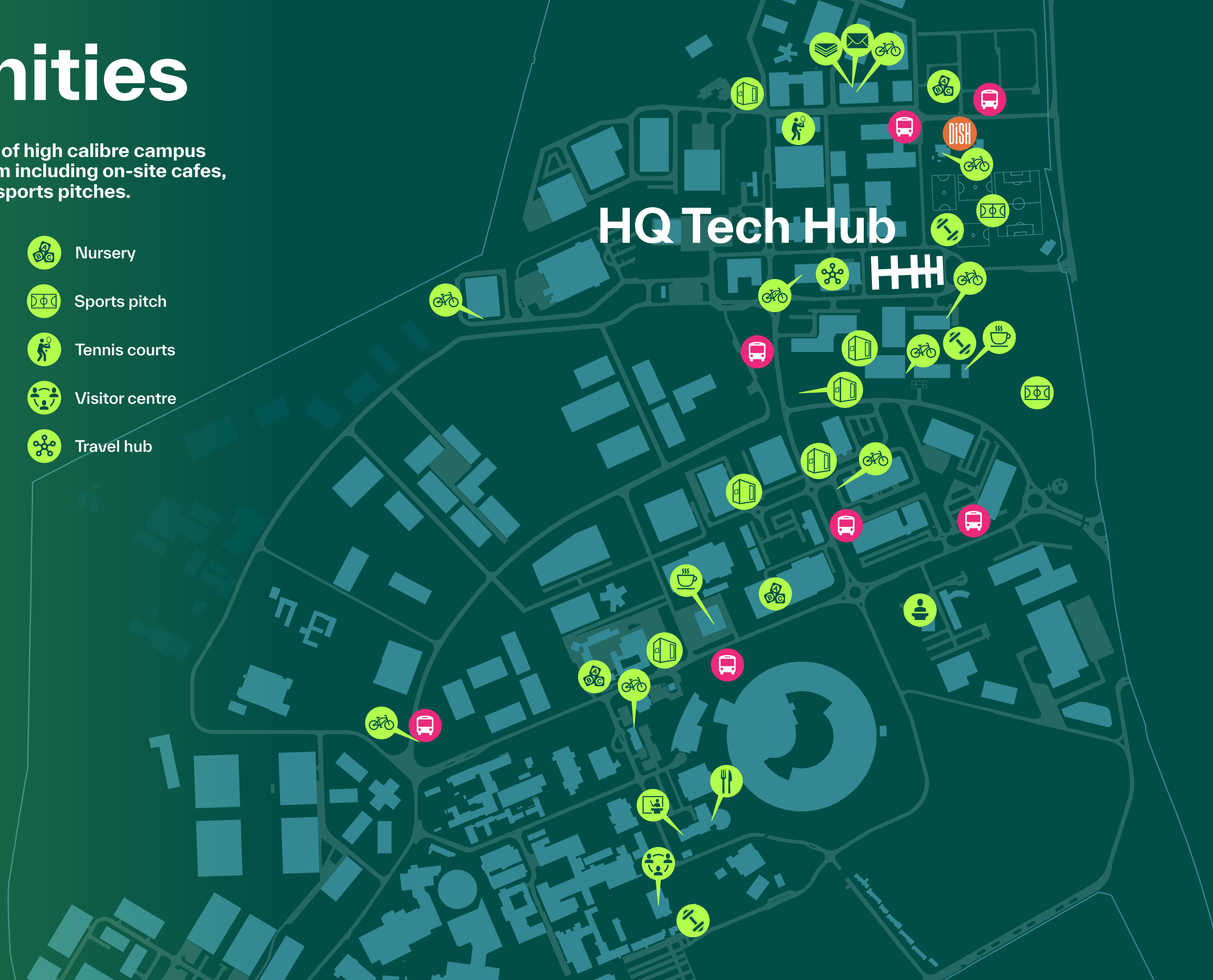


Amenities

Harwell has a wealth of high calibre campus facilities for your team including on-site cafes, nurseries, gyms and sports pitches.

-  Bus stop
-  Café
-  Campus loan bike
-  DiSH
-  ESA conference centre
-  Food and drink
-  Gym
-  Lecture Theatre
-  Meeting pods
-  Newsagents/Post Office
-  Nursery
-  Sports pitch
-  Tennis courts
-  Visitor centre
-  Travel hub

HQ Tech Hub



Campus location



Oxford city centre is just over 20 minutes drive away, Heathrow is 55 minutes by road, and nearby Didcot Parkway station connects you to London Paddington in just 42 minutes.

Road distances

| | |
|--------------------|-------------------------|
| Didcot Parkway | London |
| 5 miles / 15 mins | 60 miles / 1 hr 26 mins |
| Oxford | Heathrow |
| 15 miles / 23 mins | 70 miles / 1 hr 13 mins |

Train distances via Didcot Parkway

| | |
|-------------------|--------------|
| Reading | Bristol |
| 13 mins | 54 mins |
| London Paddington | Birmingham |
| 37 mins | 1 hr 29 mins |

Fast shuttlebus service through the day to Didcot Parkway (20 mins) and Oxford.

what3words:
///lovely.mistaken.originate

Google Maps:
Simply search "HQ Building at Harwell"

HQ Building

Thomson Avenue, Harwell
Campus, Didcot OX11 0GD

Contact

Agents



Duncan May
duncan.may@bidwells.co.uk
07879 883886

Jake Allen
jake.allen@bidwells.co.uk
07976 948445

Holly Dawson
holly.dawson@bidwells.co.uk
07917 243887



Sarah Brisbane
sarah.brisbane@eu.jll.com
020 3147 1531
07769 201458

Bridgette Partridge
bridget.partridge@eu.jll.com
07921 309816

Chris Valentine
chris.valentine@jll.com
07747 758289

Quad Two, Rutherford Avenue
Harwell Campus, Oxfordshire OX11 0DF

harwellcampus.com     

Harwell Science and Innovation Campus Limited Partnership or Bidwells or JLL give notice that these property particulars are provided as a general outline for guidance only. Intending purchasers or tenants should not rely on them as statements or representations of fact, but must satisfy themselves by inspection or otherwise as to their accuracy. As such, it does not constitute or form part of a contract. No person in the employ of Harwell Science and Innovation Campus Limited Partnership or Bidwells or JLL as representing agents of the property displayed has the authority to make or give any representation or warranty in relation to the property. Unless otherwise stated, all rents and prices quoted in these property particulars are exclusive of VAT which may be payable in addition to the amount quoted. Subject to contract. May 2026

Developer



Patrick Pringle
patrick.pringle@harwellcampus.com
07436 364410

Monika Zemla
monika.zemla@harwellcampus.com
07789 868764

David Williams
david.williams@arcgroup.io
07443 887500



A legacy reimagined for tomorrow's tech

HQ Tech Hub builds on a proud legacy of innovation, with a celebrated history that continues to inspire today's pioneers. Now entering a new era, the building offers flexible workspaces designed to help tech organisations and innovators scale, with adaptable leases that grow with your business. At its heart, refurbished communal areas and shared spaces foster collaboration, connection, and the exchange of ideas, creating a vibrant environment where the next generation of breakthroughs can take shape.

RSC Advancing the
Chemical Sciences
National Chemical Landmark
Harwell Laboratory

In recognition of the
pioneering research and development work
performed by scientists at Harwell since 1947.
Their work has provided fundamental support
in the development of nuclear power in
the UK and a greater understanding
of the chemistry of the
actinide elements.

25 November 2009