

The HQ Building

GRADE A OFFICE SPACE FROM
101 SQ FT TO 7,292 SQ FT
(9 SQ M TO 677 SQ M)

AVAILABLE TO LET NOW

HARWELL





Moderna ITC (Completion Q2 2024)

European Space Agency

ESA Conference Centre

Diamond Light Source Synchrotron

Oxford Nanopore Technologies

RAL Space

Rosalind Franklin Institute

ISIS Neutron and Muon Source

Satellite Applications Catapult

National Quantum Computing Centre

Quad One

Agilent

UK Health Security Agency

Quad Two

Quad Three (PC Q1 2025)

Medical Research Council

Zeus

HQ Building

Zeta (PC Q3 2024)

BEPO

Catalent

Helios (PC Q3 2024)

Co:Labs (PC Q2 2025)

Tech Foundry (PC Q3 2024)

- National Facilities and Key Stakeholders
- Existing and Future Developments (2023 to 2025)

Where the world's brightest minds cluster together

Harwell is the UK's leading science and innovation campus, and is embarking upon an ambitious programme of sustainable development. By 2027, we will have delivered in excess of 1.5m sq ft of cutting-edge labs, offices and advanced manufacturing space alongside a new hotel, conference centre, homes and amenities.



700

acres in Oxfordshire, part of the world-famous Oxford-Cambridge Arc

6k

scientists, engineers and innovators forming a thriving community

60+

nationalities represented, creating a place truly global character

30+

of the UK's finest universities are here: a real hub for institutions of learning

16

unique 'big science' national facilities representing a UK Government investment of £3billion

200+

acclaimed Research and Development organisations – from start-ups to tech unicorns



Scan here
to watch
the Harwell
Cluster video



The HQ Building is a comprehensively refurbished building centred around the Campus' cultural quarter offering the highest quality office plus a range of onsite amenities.

The Grade A office suites are available now. This is an opportunity for both start-ups and established businesses to become part of a cutting-edge collaborative community driving the global future of science and technology.

The building has been architecturally remodelled to provide an exceptional working environment and is set in a fully mature landscape. Amenities include an adjacent 6,000 square foot gym, an independent café, communal breakout spaces, and the newly established street food park DiSH.

The campus has been designed as a place where professionals from around the world will choose to come and work, with amenities including nurseries, sports facilities, cafés, post office, mini supermarket, weekly pop-up food stalls and attractive public spaces. This is set to be further enhanced with proposals to construct an apart-hotel, along with a residential development to complement the work life balance on Campus.



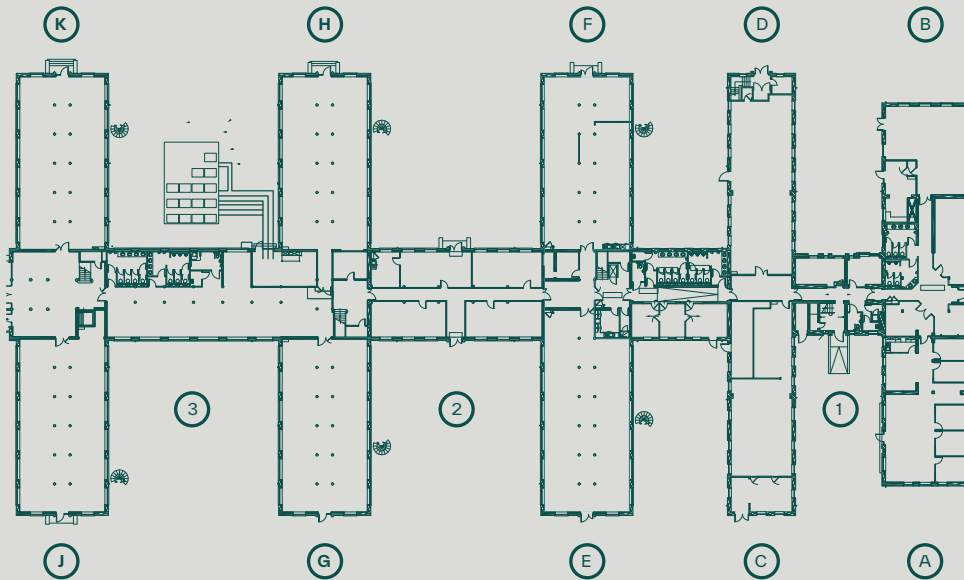
Specifications

- Open plan and furnished suites available
- Air conditioning and natural ventilation
- Gas central heating
- Comprehensively refurbished
- Ducting for data / voice / power
- Broadband: substantial bandwidth to campus
- Modern access control system
- PIR lighting
- Communal break-out areas.
- Adjacent to gym, cafe and DiSH
- Excellent natural light
- EPC: C62

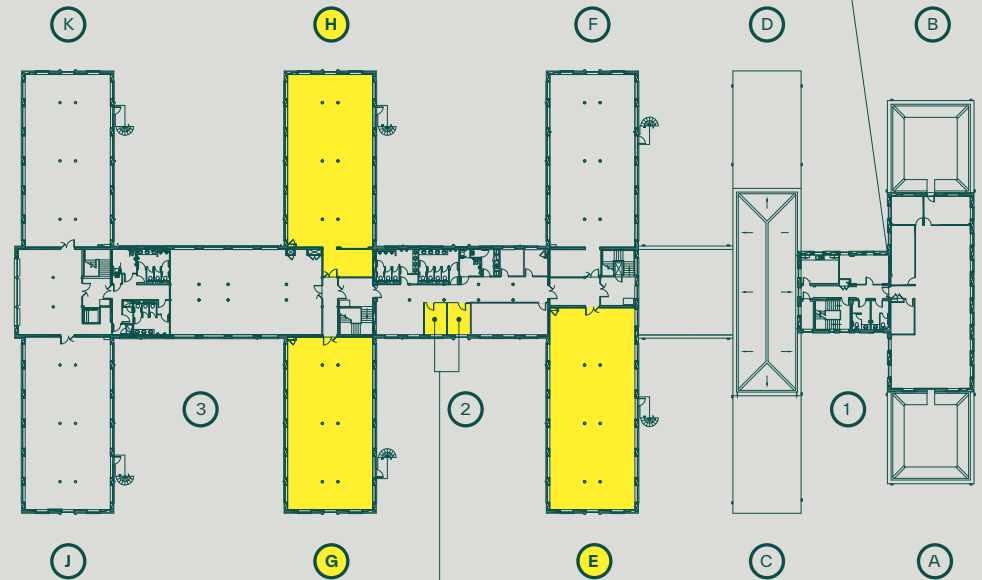
- A** HQ Building
- B** Zephyr Building
- C** Zeus
- D** Quad One and Quad Two
- E** Genesis Building
- F** RAL Space
- G** European Space Agency (ESA)
- H** Diamond Light Source
- I** Medical Research Council
- J** UK Health Security Agency
- K** MinION Building

Current availability

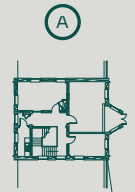
Ground Floor



First Floor



Second Floor



● Available units

First Floor Offices
Corridor Link Suites
5 and 6

Suite	Sq ft	Sq m	Availability
First Floor Wing E	2,526	235	Available
First Floor Wing H	2,381	221	Available
First Floor Wing G	2,174	202	Available
First Floor Link Suite 5	110	10	Available
First Floor Link Suite 6	101	9	Available
Total Availability	7,292	677	



Harwell is located in beautiful countryside just south of Oxford, one of the fastest growing cities in the UK.

Oxford city centre is just over 20 minutes, drive away, Heathrow is 55 minutes by road, and nearby Didcot Parkway station connects you to London Paddington in just 42 minutes.

The launch of Crossrail and the upgrade to the Didcot Parkway Line mean it will soon be possible to reach central London Underground stations in under one hour.

Road distances

Didcot Parkway	London
5m/15mins	60m/1hr 26mins
Oxford	Bristol
15m/23 mins	70m/1hr 13mins
Heathrow	Birmingham
50m/55mins	90m/1hr 31mins

Train distances *via Didcot*

Reading	Bristol
13mins	1hr 2mins
London Paddington	Birmingham
42mins	1hr 29mins

Shuttlebus service through the day to Didcot Parkway and Oxford

Satnav reference: OX11 OGD
Source: RAC, National Rail Enquiries

For further information contact

BIDWELLS

George Brown

george.brown@bidwells.co.uk
+44 (0) 1865 985628
+44 (0) 7881 664483

Robert Beatson

robert.beatson@bidwells.co.uk
+44 (0) 1865 592627
+44 (0) 7976 590996

JLL

Bridget Partridge

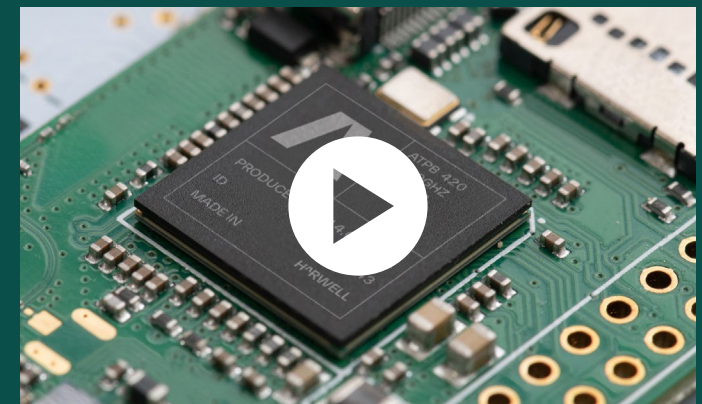
Bridget.Partridge@eu.jll.com
+44 (0) 2073 995349
+44 (0) 7921 309816

Paddy Shipp

Paddy.Shipp@eu.jll.com
+44 (0) 2070 875357
+44 (0) 7469 155531

HARWELL

Harwell Science and Innovation Campus Limited Partnership or Bidwells or JLL give notice that these property particulars are provided as a general outline for guidance only. Intending purchasers or tenants should not rely on them as statements or representations of fact, but must satisfy themselves by inspection or otherwise as to their accuracy. As such, it does not constitute or form part of a contract. No person in the employ of Harwell Science and Innovation Campus Limited Partnership or Bidwells or JLL as representing agents of the property displayed has the authority to make or give any representation or warranty in relation to the property. Unless otherwise stated, all rents and prices quoted in these property particulars are exclusive of VAT which may be payable in addition to the amount quoted. Subject to contract. January 2024



harwellcampus.com

in [harwellcampus](#)

[harwellcampus](#)